



This work is licensed under a Creative Commons Attribution 3.0 License.

## Research article

[urn.lsid:zoobank.org:pub:1A278230-80B9-487E-AF3D-72D22D7B6B7F](http://urn.lsid:zoobank.org:pub:1A278230-80B9-487E-AF3D-72D22D7B6B7F)

# Second contribution to the knowledge of the Lithosiini of Gabon: the genus *Nanna* Birket-Smith (Lepidoptera, Erebidae, Arctiinae)

Antonio DURANTE<sup>1</sup>, Emelie Arlette APINDA-LEGNOUO<sup>2</sup> & Chiara ROMANO<sup>3</sup>

<sup>1</sup> Museo di Storia naturale del Salento. Via Europa 95, 73021 Calimera, Italy

Email: [antonio.durante@msns.it](mailto:antonio.durante@msns.it) (corresponding author)

<sup>2</sup> Institut de Recherches sur l'Écologie Tropicale, Libreville, Gabon

Email: [ea.apindalegnouo@yahoo.fr](mailto:ea.apindalegnouo@yahoo.fr)

<sup>3</sup> Viale Santa Caterina Novella 26, 73013 Galatina, Italy

Email: [chiararomano@virgilio.it](mailto:chiararomano@virgilio.it)

<sup>1</sup> [urn.lsid:zoobank.org:author:EE002752-B8CA-40FA-A6B2-02B46375D850](http://urn.lsid:zoobank.org:author:EE002752-B8CA-40FA-A6B2-02B46375D850)

<sup>2</sup> [urn.lsid:zoobank.org:author:BC3E3E0E-D9C9-4664-AE16-709F8DA33D8F](http://urn.lsid:zoobank.org:author:BC3E3E0E-D9C9-4664-AE16-709F8DA33D8F)

<sup>3</sup> [urn.lsid:zoobank.org:author:A882257F-26A4-4493-8522-B1E22561E933](http://urn.lsid:zoobank.org:author:A882257F-26A4-4493-8522-B1E22561E933)

**Abstract.** The presence of the genus *Nanna* in Gabon is treated. Four species are recorded, two of which are new to science (*N. molouba* sp. nov. and *N. semigrisea* sp. nov.), and the hitherto unknown female of *Nanna ceratopygia* is described. A checklist and a key to the species of the genus *Nanna* are provided.

**Keywords.** Arctiinae, Lithosiini, *Nanna*, new species, Afrotropical Region.

Durante A., Apinda-Legnouo E.A. & Romano C. 2013. Second contribution to the knowledge of the Lithosiini of Gabon: the genus *Nanna* Birket-Smith (Lepidoptera, Erebidae, Arctiinae). *European Journal of Taxonomy* 65: 1-15. <http://dx.doi.org/10.5852/ejt.2013.65>

## Introduction

This second contribution on the Lithosiini of Gabon (the first one is Durante 2012) deals with the presence of the genus *Nanna* Birket-Smith, 1965 in the Ivindo National Park (North-eastern Gabon).

This genus was proposed by its author mainly based on West African material: Kiriakoff (1963) described *Lithosia colonoides* (Kiriakoff, 1963) from Democratic Republic of the Congo and recently Kühne (2005, 2007) extended its range to East Africa (see list below). Hitherto it has not been recorded from Gabon.

The genus was diagnosed by its author by means of the irregular weak sclerotizations of the aedeagus and the absence of the valvella; he also added (Birket-Smith 1965: 35) a small plate-like cornutus in the vesica, the vinculum not forming any saccus, and the distally rounded, membranous supra-valva.

With the present contribution, the number of *Nanna* species rises to 13, two of which are newly recorded from Gabon and two more are here described as new.

A key to the species of the genus *Nanna* is provided below.

## Material and methods

All the Gabonese material used for this paper comes from the moths collected by the first and second authors in the National Park of Ivindo, during the short rainy season from February to April.

The Park, in the North-East of Gabon at about 500 m a.s.l., has an extension of 300 000 ha, most of which is covered by primary forest and is drained by a lot of watercourses, the most important being Ivindo, the major, Djidji and Langoué (Vande Weghe 2006). The Ipassa Research Station, the place of the captures, is in the far north of the park, and the forest around is somewhat degraded with residual primary forest, old and young secondary forest, and bush and crop areas. The Ivindo National Park presents a forest with transitional characteristics between the Western Congolese forest with Atlantic influences and the real Western Congolese forest, without a clear line of demarcation (Vande Weghe 2010). The climate is equatorial with two wet seasons (a short one from February to April/May, and a longer one from August to November), a short dry season in December-January, and a long dry season from May/June to July/August.

The moths were attracted at night using three blended light lamps of 500 watt placed at about 200 m from each other, in front of a white cotton sheet. The collection started actively from 7 p.m. to about midnight. Much material was also collected in the morning on and around the white sheets.

One sheet was positioned in front of the secondary forest around the station, the second one in front of the Ivindo River on the top of a slope high over the primary forest canopy (Fig. 1), and the third one facing the research station inwards (Fig. 2).



**Fig. 1.** Primary forest on the Ivindo River at the Ipassa research station. Courtesy of Piero Carlino.

The Lithosiini moths were killed immediately after capture, using ammonia vapours, and pinned the following morning. After a few months, the moths were rehydrated and spread with standard methods (e.g., Winter 2000).

Genitalia were dissected according to Durante (2008).

Pictures were taken in the field (landscapes) and in the laboratory (adults) with a digital camera; genitalia were photographed and mounted under a trinocular stereomicroscope. The pictures were improved using the software Photoshop CS4.

Pictures of genitalia are not in due proportion.

Genitalia terminology according to Birket-Smith (1965), Klots (1970), Tikhomirov (1979) and Kristensen (2003).

The material is stored at the MSNS and the first author's collections.

### Abbreviations

ANPN	=	Agence Nationale des Parcs Nationaux, Gabon
BMNH	=	The Natural History Museum, London, United Kingdom
CENAREST	=	Centre National de la Recherche Scientifique et Technologique, Gabon
D.R.C.	=	Democratic Republic of the Congo
IRAF	=	Institut de Recherches Agronomiques et Forestières, Gabon
IRET	=	Institut de Recherches sur l'Écologie Tropicale, Gabon



**Fig. 2.** The Ipassa research station in Ivindo National Park.

MAD	=	Acronym of the first author
MSNS	=	Museo di Storia naturale del Salento, Calimera, Italy
NKMD	=	Museum für Naturkunde und Vorgeschichte, Dessau, Germany
RMCA	=	Royal Museum for Central Africa, Tervuren, Belgium
ZIM	=	Zoologisches Institut und Museum, Ernst-Moritz-Arndt-Universität, Greifswald, Germany.
ZMHB	=	Museum für Naturkunde der Humboldt-Universität, Berlin, Germany.

## Results

Phylum Arthropoda Latreille, 1829

Class Insecta Linnaeus, 1758

Order Lepidoptera Linnaeus, 1758

Family Erebidae Leach, [1815]

Subfamily Arctiinae Leach, [1815]

Tribus Lithosiini Billberg, 1820

Genus *Nanna* Birket-Smith, 1965

At present, the genus *Nanna* includes 13 species of which two are newly recorded for Gabon, *N. ceratopygia* Birket-Smith, 1965 and *N. eningae* (Plötz, 1880), and two are endemic in Gabon (*N. molouba* sp. nov. and *N. semigrisea* sp. nov.).

## Remarks

In the original paper, Birket-Smith does not provide any information about the etymology and grammatical gender. It is very probably derived from the name “Nanna”, the god of the moon in Sumerian mythology. That name should be masculine, but the author treats it as feminine, making it agree with the specific names, such as *magna*. According to the art. 30.2.3 of ICZN, the genus name *Nanna* has to be considered feminine.

## Checklist of species belonging to the genus *Nanna*

<i>Nanna ceratopygia</i> Birket-Smith, 1965	Nigeria, Cameroon, Gabon (type in BMNH)
<i>Nanna collinsii</i> Kühne, 2007	D.R.C., Kenya (type in RMCA)
<i>Nanna colonoides</i> (Kiriakoff, 1963)	D.R.C. (type in RMCA)
<i>Nanna diplosticta</i> (Bethune-Baker, 1911)	(type species) Nigeria, Cameroon, Angola, (type in BMNH)
<i>Nanna eningae</i> (Plötz, 1880)	Ivory Coast, Togo, Nigeria, Cameroon, Gabon (type in ZIM)
<i>Nanna griseata</i> Kühne, 2007	Ivory Coast (type in RMCA)
<i>Nanna kamerunica</i> Kühne, 2007	Cameroon (type in NKMD)
<i>Nanna loloana</i> (Strand, 1912)	Cameroon (type in ZMHB)
<i>Nanna magna</i> Birket-Smith, 1965	Cameroon (type in its author’s collection)
<i>Nanna melanosticta</i> (Bethune-Baker, 1911)	Ghana, Angola (type in BMNH)
<i>Nanna molouba</i> sp. nov.	Gabon (type in MSNS)
<i>Nanna naumanni</i> Kühne, 2005	Kenya (type in its author’s collection)
<i>Nanna semigrisea</i> sp. nov.	Gabon (type in MSNS)

**Key to the males of the species of *Nanna***

The following key is based mainly on the genitalia because the habitus of the species included in the genus *Nanna* is very similar. Furthermore the females are not included due to our fragmented knowledge about them.

1. Forewings ochreous yellow ..... *Nanna ceratopygia* Birket-Smith, 1965  
– Forewings white or light grey ..... 2
2. Male antennae bipectinate ..... 3  
– Male antennae serrate or ciliated ..... 4
3. Ala valvae of the male genitalia with a triangular process at its distal third .....  
..... *Nanna molouba* sp. nov.  
– Ala valvae of the male genitalia without a triangular process .....  
..... *Nanna magna* Birket-Smith, 1965
4. Male genitalia processus basalis plicae clearly noticeable (1st group of B.-S. 1965) ..... 5  
– Male genitalia processus basalis plicae not noticeable or absent (2nd group of B.-S. 1965) ..... 12
5. Processus basalis plicae from half length of valva up to longer than the entire valva ..... 6  
– Processus basalis plicae shorter than half length of valva ..... 10
6. Supraalva spatulate and clearly shorter than ala valvae ..... *Nanna loloana* (Strand, 1912)  
– Supraalva as long as or longer than ala valvae ..... 7
7. Ala valvae distally bent in U-shape ..... *Nanna ceratopygia* Birket-Smith, 1965  
– Ala valvae tapering and just smoothly bent ..... 8
8. Processus basalis plicae longer than supraalva, S-shaped ..... *Nanna naumanni* Kühne, 2005  
– Processus basalis plicae shorter than supraalva, almost straight ..... 9
9. Uncus strong and long ..... *Nanna diplisticta* (Bethune-Baker, 1911)  
– Uncus slender and short ..... *Nanna colonoides* (Kiriakoff, 1963)
10. Aedeagus slender (eight times longer than broad) ..... *Nanna griseata* Kühne, 2007  
– Aedeagus normally sized (less than five times longer than the average width) ..... 11
11. Processus basalis plicae deeply falcate ..... *Nanna semigrisea* sp. nov.  
– Processus basalis plicae less curved and shorter ..... *Nanna collinsii* Kühne, 2007
12. Supraalva very large, ear-like ..... *Nanna kamerunica* Kühne, 2007  
– Supraalva slender and long ..... 13
13. Distal process of the ala valvae slender and long ..... *Nanna eningae* (Plötz, 1880)  
– Distal process of the ala valvae short and stubby ..... *Nanna melanosticta* (Bethune-Baker, 1911)

## Account of the Gabonese species

*Nanna ceratopygia* Birket-Smith, 1965

Figs 3A-B, 4A, 5A

*Nanna ceratopygia* Birket-Smith, 1965: 40-42.

### Type material

#### Holotype

♂, BMNH, examined.

#### Allotype

♀, GABON: Makokou-Ipassa, 500 m, 0°30'43"N, 12°48'13"E, 16-28 Feb. 2012; gen. prep. n. 730/13 MAD, MSNS.

### Type locality

Bitje, Ja river, Cameroons, leg. Joyce ? 1915.

### Other material examined

GABON: Makokou-Ipassa, 500 m, 0°30'43"N, 12°48'13"E, 2 ♂♂, 1 ♀, 5-10 Apr. 2010; 3 ♂♂, 19 Feb.-11 Mar. 2011; 5 ♂♂, 1 ♀, 16-28 Feb. 2012; MSNS and MAD.

### Description

#### Habitus

Wingspan: ♀ 39-44 mm. General aspect similar to the male, larger and with a bigger abdomen.

#### Genitalia

Seventh segment slightly sclerotized, one and a half times longer than the sixth segment; the sternite with a deep concavity in the middle of its caudal margin to accommodate the sterigma; pleurae with one triangular membranous thickness, cephalad with a shallow pouch consisting of membranous thick tissue. Eighth segment slightly sclerotized, as long as the sixth one; sternite with two membranous lateral shallow concavities and the central portion forming a well sclerotized squarish lamella postvaginalis. Anterior apophyses very short, about one third as long as the eighth segment; posterior apophyses two times longer than the anterior ones. Dorsal pheromone glands a little longer than the posterior apophyses.

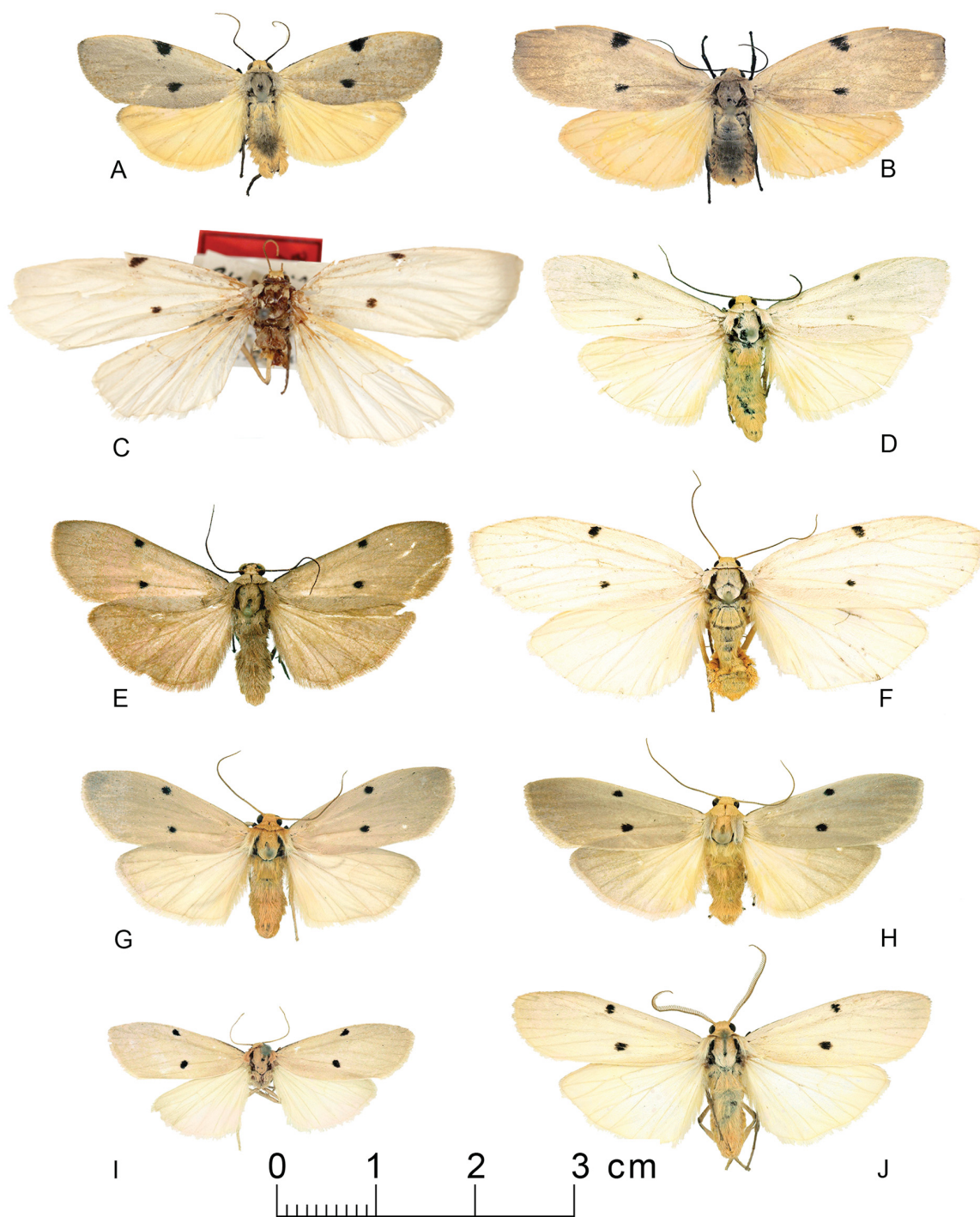
Ostium bursae membranous, no lamella antevaginalis. Ductus bursae almost as long as large broad, internally covered by spiculate thorns; its caudal portion naked, with a small dorsal dome-shaped appendix holding the ductus seminalis. Corpus bursae lenticular, internally covered by spiculate thorns except around the signum. Signum concave, roundish, with small thorns.

### Distribution

Cameroon (type locality, Birket-Smith 1965). Nigeria (Birket-Smith 1965); Gabon (new locality).

### Remarks

This species, hitherto only known from the type locality and Nigeria, is now also reported from Gabon. The female is recorded and hereafter described for the first time (an allotype is designed in the sense of ICZN art. 72.1.3, Recommendation 72A).



**Fig. 3.** Adults. **A.** *Nanna ceratopygia* Birket-Smith, 1965, ♂, Gabon, Makokou-Ipassa, 500 m, 0°30'43"N 12°48'13"E, 19 Feb.-11 Mar. 2011. **B.** *Nanna ceratopygia*, ♀ allotype. **C.** *Nanna eningae* (Plötz, 1880), ♀ holotype. **D.** *Nanna eningae*, ♂, Gabon, Makokou-Ipassa, 500 m, 0°30'43"N 12°48'13"E, 19 Feb.-11 Mar. 2011, gen. prep. n. 697/12 MAD. **E.** *Nanna eningae*, ♂, Gabon, Makokou-Ipassa, 500 m, 0°30'43"N 12°48'13"E, 16-28 Feb. 2012, gen. prep. n. 705/12 MAD. **F.** *Nanna eningae*, ♀, Gabon, Makokou-Ipassa, 500 m, 0°30'43"N 12°48'13"E, 5-10 Apr. 2010. **G.** *Nanna semigrisea* sp. nov., ♂ paratype, gen. prep. n. 709/12 MAD. **H.** *Nanna semigrisea* sp. nov., ♂ paratype, gen. prep. n. 708/12 MAD. **I.** *Nanna semigrisea* sp. nov., ♀ paratype, gen. prep. n. 699/12 MAD. **J.** *Nanna molouba* sp. nov., ♂ holotype.

*Nanna eningae* (Plötz, 1880)  
Figs 3C-F, 4B, 5B

*Gnophria eningae* Plötz, 1880: 80.

*Eilema eningae* var. *pia* Strand, 1912: 99-100.

*Nanna montana* Birket-Smith, 1965: 44-45; synonymized by Kühne (2005).

*Ilema eningae* – Hampson 1900: 156.

*Nanna pia* – Birket-Smith 1965: 43-44; synonymized by Kühne (2005).

**Type material**

Holotype, ♀, ZIM., only the picture examined.

**Type locality**

W. Africa, Eningo [Ivory Coast], 13 Jun. 1875, leg. R. Buckholz.

**Other material examined**

GHANA: Ashanti, Bobiri, 1 ♂, 25 May 2011.

D.R.C: Eala, 1 ♂, Oct. 1936; Sankuru, 1 ♂, 25 Nov. 1951.

NIGERIA: Odi, 1 ♂, 30-31 May 1997.

GABON: Makokou-Ipassa, 500 m, 0°30'43"N, 12°48'13"E, 17 ♂♂, 5 ♀♀, 5-10 Apr. 2010; 3 ♂♂, 19 Feb.-11 Mar. 2011; 3 ♂♂ 16-28 Feb. 2012; MSNS and MAD.

**Distribution**

Ivory Coast (type locality, Plötz 1880); Ghana (RMCA coll.); Togo (Strand 1912); Nigeria (Birket-Smith 1965; Durante & Panzera 2001); Cameroon (Strand 1912; Birket-Smith 1965); DRC (RMCA coll.); Gabon (new locality).

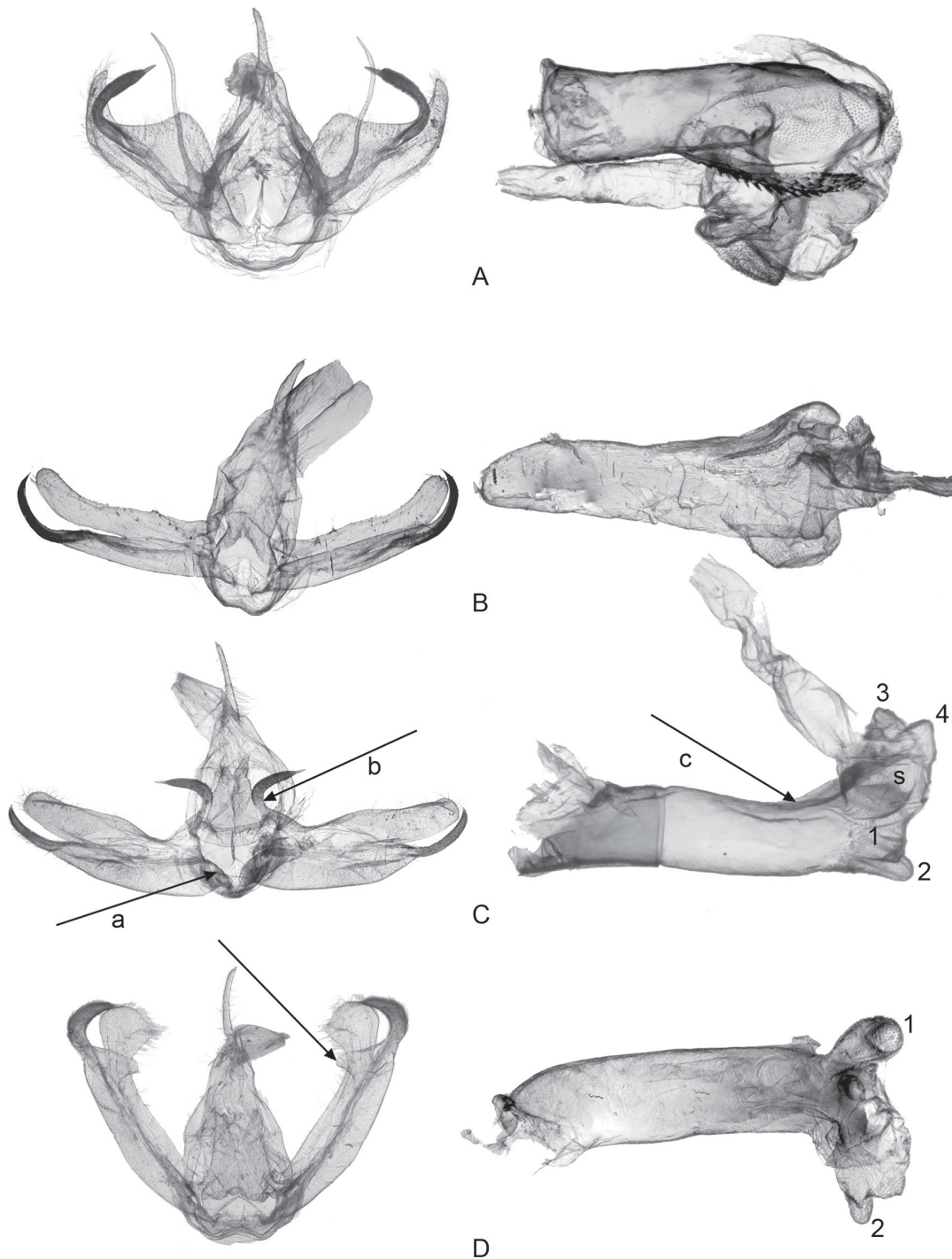
**Remarks**

Kühne (2005) synonymized *Nanna montana* and *N. eningae* var. *pia* with *N. eningae* based on the variability of the wing colour and the colour pattern of *N. eningae* (see Kühne 2007: 354), and on comparisons with the type of *N. eningae* (Kühne 2007: 354), disregarding the male genitalic differences described by Birket-Smith between *N. montana* and *N. pia*. They were probably considered to represent only a minor intraspecific variability. According to Birket-Smith (1965: 43, 47), the types of *N. eningae* and *N. pia* were untraceable, but Kühne (2005) explained that he was able to compare his specimens of *N. eningae* and *N. pia* with the types in the Plötz collection. However, Kühne (2007) admitted to the possibility that the *N. eningae*-group is composed of several taxa, but he did not go further into this matter.

Durante & Panzera (2001) did not provide clear distinctive characters for lack of material and classified a single specimen from Nigeria as *N. montana*, based on male genitalic morphology. In this respect, it should be remarked that one specimen from Ghana (RMCA collection) shows all the characteristics described by Birket-Smith (1965) about *N. pia*, leading to the conclusion that the variability between *N. pia* (*eningae*) and *N. montana* could be concrete.

At present, although the examined series from Gabon does not show any genitalic variability within itself (in contrast with the above supposed “minor intraspecific variability”), the conclusions of Kühne (2005) are here cautiously accepted, since the synonymy can be supported by the similarity of the Gabonese female genitalia with the ones of *N. pia* figured in Birket-Smith (1965) and the similarity of





**Fig. 4.** Male genitalia. Figures are not in equal proportion; the aedeagus, on the right, is enlarged. **A.** *Nanna ceratopygia* Birket-Smith, 1965, ♂, Gabon, Makokou-Ipassa, 500 m, 0°30'43"N 12°48'13"E, 19 Feb.-11 Mar. 2011, gen. prep. n. 729/13 MAD. **B.** *Nanna eningae* (Plötz, 1880), ♂, Gabon, Makokou-Ipassa, 500 m, 0°30'43"N 12°48'13"E, 19 Feb.-11 Mar. 2011, gen. prep. n. 697/12 MAD. **C.** *Nanna semigrisea* sp. nov., ♂ paratype, Gabon, Makokou-Ipassa, 500 m, 0°30'43"N 12°48'13"E, 19 Feb.-11 Mar. 2011., gen. prep. n. 698/12 MAD. Arrows: a = ventral sclerotization of the basis valvae; b = processus basalis plicae; c = distal sclerotized bar. s = tha moderate swelling in the vesica. 1-4 = lobes of the vesica. **D.** *Nanna molouba* sp. nov., ♂ paratype, Gabon, Makokou-Ipassa, 500 m, 0°30'43"N 12°48'13"E, 5-10 Apr. 2010, gen. prep. n. 562/10 MAD.

the Gabonese male genitalia with the ones of *N. montana*, both figured in Birket-Smith (1965) and in Durante & Panzera (2001), in addition to the existing wing colour variability (see Fig. 3E).

*Nanna semigrisea* sp. nov.

[urn:lsid:zoobank.org:act:0B5D4B5E-108E-4376-990C-ED2DADD56869](http://urn:lsid:zoobank.org:act:0B5D4B5E-108E-4376-990C-ED2DADD56869)

Figs 3I, 4C, 5C

**Diagnosis**

Species quite distinguishable in the genus thanks to the light grey forewings and the usually paler hindwings; it is, however, very similar to *Nanna griseata*. Male genitalia similar to those of *Nanna collinsii* and *N. griseata*, but the processus basalis plicae is longer and more falcate in *N. semigrisea* sp. nov.; moreover, *N. collinsii* has shorter valvae and a larger aedeagus, *N. griseata* a more slender aedeagus.

**Etymology**

The name originates from the combination of the Latin prefix *semi-* (meaning “half”) and the adjective *griseus* (meaning “grey”).

**Type material**

**Holotype**

♂, MSNS.

**Paratypes**

2 ♂♂, 5-10 Apr. 2010; 5 ♂♂, 1 ♀, 19 Feb.-11 Mar. 2011; 2 ♂♂, 16-28 Feb. 2012. Same locality as the holotype. MSNS and MAD.

**Type locality**

GABON: Makokou-Ipassa, 500 m, 0°30'43"N, 12°48'13"E, 19 Feb.-11 Mar. 2011.

**Description**

**Habitus**

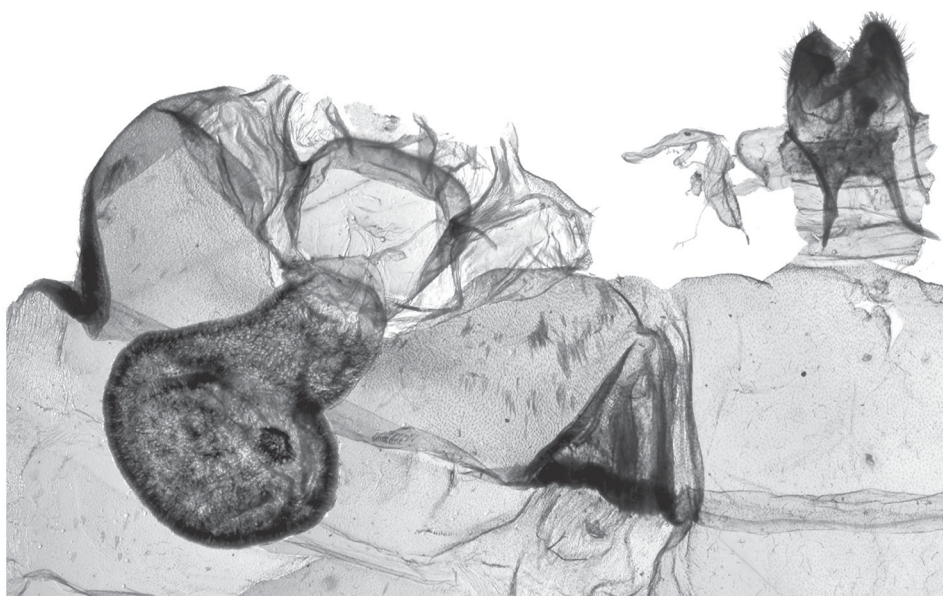
Wingspan: ♂ 36-41 mm; ♀ 31 mm. Forewing upper side ground colour light grey, slightly darkening distally; costa with the proximal two fifths greyish; pattern with two black dots on the median area, one on the costal margin, and another one between the CuA2 and the anal vein. Hindwing upper side ground colour white, sometimes shading to grey toward the apex and termen. Forewing underside ground colour darker grey than the upper side, gradually shading to creamy white toward the base and the inner margin. Hindwing underside as in the upper side. Fringes of the same colour as that wing's ground colour.

Head ochreous yellow, labial palpi porrect, ochreous yellow male antennae ciliated, female filiform, ochreous yellow.

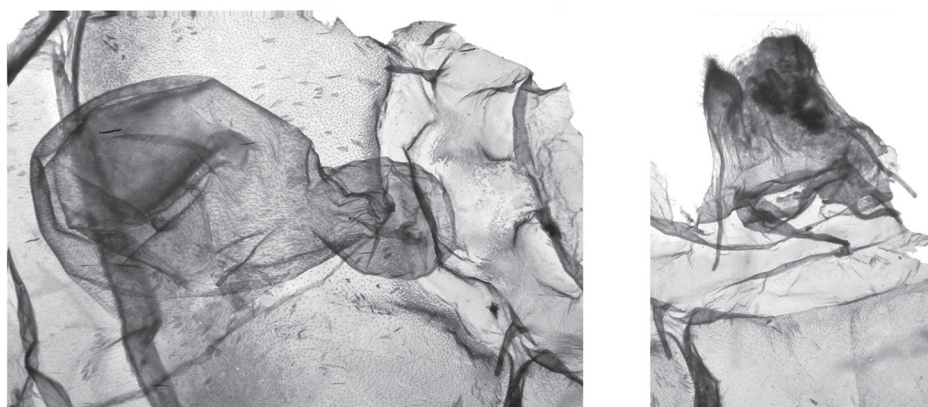
Patagia uniformly ochreous yellow, tegulae and notum ochreous yellow, shading posteriorly to greyish white. Thorax ventrally yellow.

Male legs light yellow with the distal end of the femur dark grey; forelegs with femur and tibia shading into light grey; in the female homogeneous light yellow. Praetarsi blackish. Spurs formula 0-2-4.

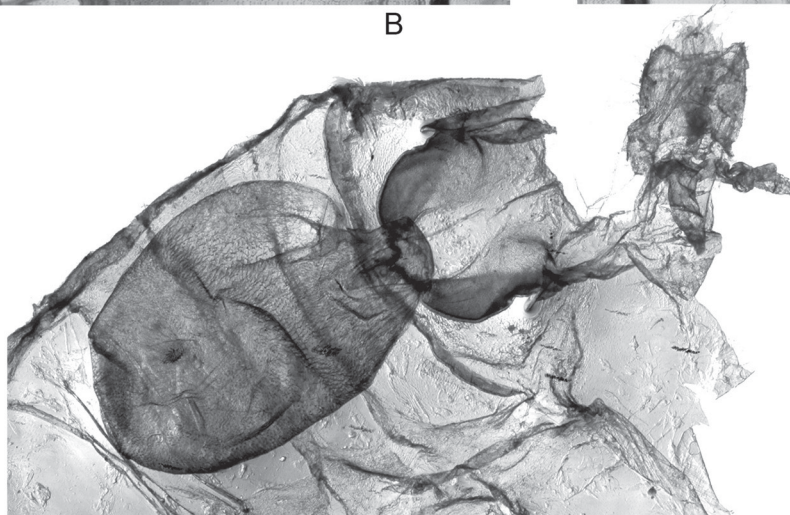
Abdomen greyish white, shading to ochreous yellow starting from about the sixth segment to the terminalia.



A



B



C

**Fig. 5.** Female genitalia. Figures are not in equal proportion. **A.** *Nanna ceratopygia* Birket-Smith, 1965, ♀ allotype. **B.** *Nanna eningae* (Plötz, 1880), ♀, Gabon, Makokou-Ipassa, 500 m, 0°30'43''N 12°48'13''E, 5-10 Apr. 2010, gen. prep. n. 558/10 MAD. **C.** *Nanna semigrisea* sp. nov., ♀ paratype

### **Genitalia**

MALE. A8 medially membranous and laterally slightly sclerotized, length about one third that of the seventh segment.

Uncus slender, long, caudally bent, ending in a point; tegument pear-shaped (ventral view); vinculum semicircular, strong, with two ventral swellings if pressed under cover slide. Juxta great, upside down Y-shaped, well sclerotized.

Basis valvae ventrally sclerotized (a round bar-like sclerotization contiguous to the dorsal margin of the ala valvae, Fig. 4C, arrow a); medially membranous; dorsally well sclerotized, with a strong processus basalis plicae (tendon of Kühne 2007), deeply falcate, with its distal three fifths covered by dense tiny thorns, terminating with a strong spike (Fig. 4C, arrow b).

Ala valvae sclerotized, distally tapering. The distal process strongly sclerotized, covered by thorns dorsally for all its length and completed only on its last fourth, ending in a point.

Supravalva more membranous, finger shaped, just a little shorter than ala valvae.

Aedeagus quite narrow, partially membranous (pseudaedoeagus of Birket-Smith 1965), with a distal narrow sclerotized bar terminating in a curl. Vesica small, membranous, with two proximal (numbered 1 and 2 in Fig. 4C) and two distal (3 and 4) lobes covered by very small spines; opposite to the curl (arrow c), a moderate swelling (s).

FEMALE. Seventh segment slightly sclerotized, one and a half times longer than the sixth segment. Eighth segment about half as long as the sixth one, membranous. Anterior apophyses as short as the eighth segment; posterior apophyses three times longer than the anterior ones. Dorsal pheromone glands a little longer than posterior apophyses.

Lamella postvaginalis present as a strong shield inserting cephalad in the seventh sternum, which surrounds the lamella with two lateral well evident folds.

Ostium membranous, with two small anterior swellings, which cannot be interpreted as lamellae antevaginalis.

Ductus bursae short, membranous with the dorsal wall strongly sclerified, triangularish.

Corpus bursae ovoid, internally covered by small slender thorns except around the signum, with a small dome-shaped posterior appendix; ductus seminalis arising from the appendix. Signum concave, oblong, covered by very tiny spines.

*Nanna molouba* sp. nov.

[urn:lsid:zoobank.org:act:2B2F8C94-2AA5-45E0-9A5B-DEF470A55E0D](http://urn:lsid:zoobank.org:act:2B2F8C94-2AA5-45E0-9A5B-DEF470A55E0D)

Figs 3J, 4D

### **Diagnosis**

Species similar to *N. collinsi*, *N. colonoides*, *N. eningae* and *N. melanosticta*, but easily distinguishable thanks to the bipectinate antennae of *N. molouba* sp. nov. *Nanna magna* also has bipectinate antennae, but its genitalia are clearly different.

### **Etymology**

This species is dedicated to the kind Dr. Aurelie Flore Molouba, head of the Scientific Commission of the CENAREST. Noun in apposition (ICZN article 11.9.1.2).

### **Type material**

#### **Holotype**

♂, MSNS.

#### **Paratypes**

5 ♂♂, 5-10 Apr. 2010; 3 ♂♂, 19 Feb.-11 Mar. 2011. Same locality as the holotype. MSNS and MAD.

### **Type locality**

GABON: Makokou-Ipassa, 500 m, 0°30'43"N, 12°48'13"E, 19 Feb.-11 Mar. 2011.

### **Description**

#### **Habitus**

Wingspan: ♂ 36-42 mm. Forewing upper side ground colour whitish; basal third of the costa sometimes blackish; pattern with two black dots on the median area, one on the costal margin, and another one between the CuA2 and the anal vein. Hindwing upper side ground colour white. Forewing underside ground colour slightly darker than the upper side, with a creamy fascia along the costal margin. Hindwing underside as in the upper side. Fringes of the same colour as that wing's ground colour.

Head yellow, labial palpi yellow, porrect or slightly downward, male antennae bipectinate, yellow along the first fourth, shading to brown toward the apex.

Patagia yellow, tegulae whitish, notum anteriorly yellow, shading backward to whitish. Thorax ventrally yellow.

Forelegs yellow with femur and tibia externally grayish brown, tarsus lighter; mid- and hindlegs yellow with articulation between femur and tibia grayish brown. All praetarsi brown. Spurs formula 0-2-4.

Abdomen yellow.

#### **Genitalia**

MALE. A8 tergum rectangular, slightly shorter than seventh segment; A8 sternum slightly sclerotized, bar-like, arch-shaped, with two apodemal blunt cephalad appendices.

Uncus slender, long, caudally bent, ending in a point; tegument pear-shaped (ventral view); vinculum semicircular, strong, with a median concavity. Juxta great, upside down Y-shaped, well sclerotized.

Basis valvae sclerotized at the junction with the juxta, with which it forms a pseudo-articulation; membranous at supra-valvar level.

Ala valvae with ventral margin sclerotized and swollen, dorsal margin membranous.

Supra-valva sclerotized with ventral margin membranous.

Distal process of the ala valvae strongly sclerotized, with a triangular process (Fig. 4D, arrow) at the distal third of the valvar length, and a robust hook-like termination ending in a big thorn and dorsally

covered by slim spines. Distal process of the supraalva less sclerotized than the previous one, large and spatulate.

Aedeagus quite narrow, partially membranous (pseudaeoedeagus of Birket-Smith 1965), without coecum; vesica small, with sparse tiny thorns and two lobes, one at the base and one apically on the main lobe (respectively numbered 1 and 2 in Fig. 4D).

## Discussion

The genus *Nanna* is an entirely African genus, with mainly Western and Central distribution, and it seems to be chiefly associated with a tropical habitat with a high humidity level.

From a strictly systematic point of view, the genus is quite well distinguishable from others by its large wingspan, generally white wing colour and peculiarities in its genital apparatus (see Introduction).

In Gabon, at the moment, it consists of four species; however, given the high biodiversity in other groups (even insects other than moths; Durante, personal observation), it is very probable that the number will increase following future research. Most species, based on present knowledge, occur in Cameroon (six), followed by Gabon (four) and Nigeria (three), due probably to the extension of the recording survey in each country.

## Acknowledgements

Permission to visit and collect in the Gabonese parks was obtained through an international convention established between the CENAREST and the MSNS in order to implement common research projects. The contributions of the IRAF and IRET were fundamental in helping with facilities in the Ipassa Research Station, and the authors thank the following for their important roles in this MSNS collaboration: Daniel Franck Idiata (Commissaire Général of the CENAREST), Auguste Ndoutoume-Ndong (Director of the IRAF), Alfred Ngomanda (Director of the IRET), Joseph Vivien Okouyi Okouyi (Conservator of the Ivindo National Park) and Aurélie Flore Molouba (Commission Scientifique sur les Autorisations de Recherche of the CENAREST). Many thanks are due to the ANPN for permission to collect material for research purpose in the parks. The authors also thank Piero Carlino, Luca Nocco, Sandro Panzera, and Luigi Potenza of MSNS for their support of the Gabonese research program. This study has been possible thanks to the courtesy of Ugo Dall'Asta and Alice-Marie Busset, RMCA, and of Martin Honey, BMNH. Many thanks are due to Koen Martens, University of Ghent, for very useful suggestions and language revision, and to two anonymous referees for valuable advice. The present paper (marked MSNS-GE3) has been prepared within the Gabonese research program of the MSNS (being the previous paper Bayendi Loudit *et al.*, in prep., marked MSNS-GE2).

## References

- Birket-Smith J. 1965. *A revision of the West African Eilemic Moths, based on the Male Genitalia*. (Lep. Arctiidae, Lithosiinae; incl. gen. *Crococosa*, *Eilema*, *Lithosia*, *Pelosia*, *Phryganopsis a. o.*). Papers from the Faculty of Science, Series C (Zoology) 1, Haile Sellassie I University, Addis Ababa.
- Durante A. 2008. *Asurooides*, a new genus of lithosiine moths (Lepidoptera, Arctiidae, Lithosiinae). *Zootaxa* 1713: 53-68.
- Durante A. 2012. The genus *Afrasura* Durante, 2009 in Gabon, with description of five new species and a new species group (Erebidae: Arctiinae: Lithosiini). *Zootaxa* 3478: 383-398.
- Durante M.A. & Panzera S. 2001. I Lepidotteri del Delta del Niger (secondo contributo) (Lepidoptera, Arctiidae, Lithosiinae). *Lambillionea* 101 (2): 203-215.

- Hampson G.F. 1900 *Catalogue of the Lepidoptera Phalaenae in the British Museum*. Vol. 2. *Arctiidae (Nolinae, Lithosiinae) in the collection of British Museum*. Printed by Order of the Trustees, London.
- Kühne L. 2005. Neue Taxa und neue Synonyme afrikanischer Arctiidae (Lepidoptera). *Lambillionea* 105 (3): 486-493.
- Kühne L. 2007. Beschreibung neuer Flechtenbärenarten aus Afrika nebst taxonomischen Anmerkungen (Arctiidae: Lithosiinae). In: Pecks H. & Hacker H. (eds) *Esperiana Memoir* 3: 353–394. Wissenschaftlicher Verlag - Pecks, Schwanfeld.
- Kiriakoff S.G. 1963. Lepidoptera Heterocera. In: *Exploration du Parc National Albert (Deuxième Série)* 16 (3): 73-124. Institut des Parcs Nationaux du Congo et du Rwanda, Bruxelles.
- Klots A.B. 1970. Lepidoptera. In: Tuxen S.L. (ed.) *Taxonomist's Glossary of Genitalia in Insects (2nd rev.)*: 115-130. E. Munksgaard, Copenhagen.
- Kristensen N.P. 2003. Skeleton and muscles: adults. In: Kristensen N.P. (ed.) *Lepidoptera, Moths and Butterflies*. Vol. 2: *Morphology, Physiology, and Development*: 39-131. Handbook of Zoology 4 (36), W. de Gruyter, Berlin, New York.
- Plötz C. 1880. Verzeichniss der vom Professor Dr. R. Buchholz in West-Afrika gesammelten Schmetterlinge. *Entomologische Zeitung* 41 (1-3): 76-88.
- Strand E. 1912. Zoologische Ergebnisse der Expedition des Herrn G. Tessmann nach Süd-Kamerun und Spanisch-Guinea. Lepidoptera. *Archiv für Naturgeschichte, Abteilung A* 78 (9): 92-106.
- Tikhomirov A.M. 1979. The phylogenetic relationship and classification of European Arctiidae (Lepidoptera) as indicated by the functional morphology of the male genitalia. *Entomological Review* 58: 63-69.
- Vande Weghe G.R. 2010. *Papillons du Gabon*. Wildlife Conservation Society, Libreville.
- Vande Weghe J.P. 2006. *Ivindo et Mwagna. Eaux noires, forêts vierges et baïs. Les parcs nationaux du Gabon*. Wildlife Conservation Society, Libreville.
- Winter W.D. 2000. *Basic Techniques for Observing and Studying Moths and Butterflies*. Memoir 5, Lepidopterists' Society, Los Angeles.

*Manuscript received: 18 July 2013*

*Manuscript accepted: 21 October 2013*

*Published on: 22 November 2013*

*Topic editor: Koen Martens*

*Desk editor: Charlotte Thionois*

Printed versions of all papers are also deposited in the libraries of the institutes that are members of the *EJT* consortium: Muséum National d'Histoire Naturelle, Paris, France; National Botanic Garden of Belgium, Meise, Belgium; Royal Museum for Central Africa, Tervuren, Belgium; Natural History Museum, London, United Kingdom; Royal Belgian Institute of Natural Sciences, Brussels, Belgium; Natural History Museum of Denmark, Copenhagen, Denmark.

# ZOBODAT - [www.zobodat.at](http://www.zobodat.at)

Zoologisch-Botanische Datenbank/Zoological-Botanical Database

Digitale Literatur/Digital Literature

Zeitschrift/Journal: [European Journal of Taxonomy](#)

Jahr/Year: 2013

Band/Volume: [0065](#)

Autor(en)/Author(s): Durante Antonio, Romano Chiara, Apinda-Legnouo Emelie Arlette

Artikel/Article: [Second contribution to the knowledge of the Lithosiini of Gabon: the genus \*Nanna\* Birket-Smith \(Lepidoptera, Erebidae, Arctiinae\) 1-15](#)